

42/38

38

STATE OF FLORIDA  
 COUNTY OF PALM BEACH  
 This Plan was filed for record at \_\_\_\_\_ M.  
 this \_\_\_\_\_ day of \_\_\_\_\_  
 19\_\_\_\_, and duly recorded in Plat Book No. \_\_\_\_\_  
 on page \_\_\_\_\_  
 JOHN B. DUNKLE, Clerk Circuit Court.  
 By \_\_\_\_\_, D.C.

CURVE DATA

CURVE NO.	ARC	CENTRAL ANGLE	RADIUS
C-1	139.28'	10°-30'-00"	760.00'
C-2	80.11'	102°-00'-00"	45.00'
C-3	53.40'	102°-00'-00"	30.00'
C-4	31.03'	2°-50'-40"	625.00'
C-5	10.02'	0°-55'-06"	625.00'
C-6	28.92'	2°-39'-04"	625.00'
C-7	59.96'	6°-24'-50"	625.00'
C-8	18.25'	1°-47'-14"	685.30'
C-9	87.83'	8°-36'-09"	585.00'
C-10	65.05'	6°-12'-57"	600.00'
C-11	92.34'	8°-36'-09"	615.00'
C-12	36.35'	3°-23'-12"	615.00'
C-13	36.48'	3°-23'-12"	615.00'
C-14	19.05'	1°-46'-28"	615.00'
C-15	23.12'	2°-15'-53"	585.00'
C-16	46.93'	4°-35'-47"	585.00'
C-17	17.78'	1°-44'-29"	585.00'
C-18	87.83'	8°-36'-09"	585.00'
C-19	90.09'	8°-36'-09"	600.00'
C-20	24.99'	2°-23'-12"	600.00'
C-21	34.44'	3°-12'-32"	615.00'
C-22	22.34'	8°-36'-09"	615.00'
C-23	57.39'	5°-23'-37"	615.00'
C-24	43.18'	4°-18'-09"	575.00'
C-25	99.12'	14°-32'-03"	600.00'
C-26	40.84'	7°-00'-00"	30.00'
C-27	61.26'	7°-00'-00"	45.00'
C-28	17.03'	0°-49'-12"	1190.00'
C-29	141.54'	6°-48'-53"	1190.00'
C-30	396.41'	19°-05'-12"	285.00'
C-31	71.44'	14°-21'-47"	300.00'
C-32	75.20'	14°-21'-47"	315.00'
C-33	78.97'	14°-21'-47"	1190.00'
C-34	50.01'	2°-24'-29"	1190.00'
C-35	48.39'	2°-21'-31"	1190.00'

A PORTION OF A P.U.D.

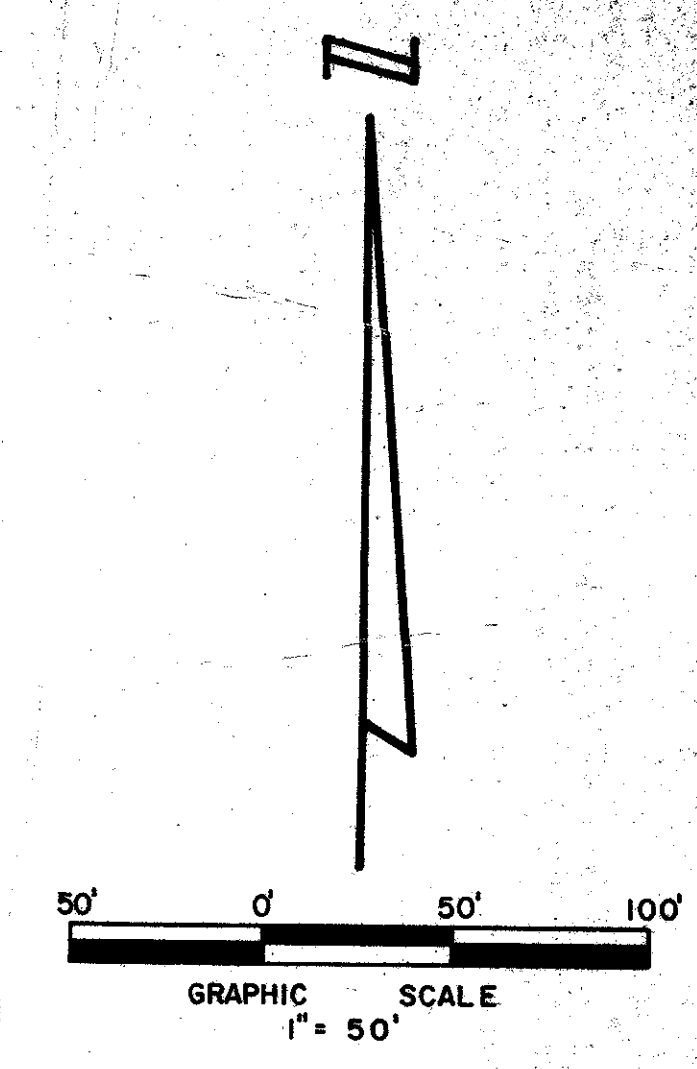
ALPHA AT INDIAN SPRING

BEING A REPLAT OF TRACT "A", INDIAN SPRING PLAT NO. 3, AS RECORDED IN PLAT BOOK 41, PAGES 6 THROUGH 8, PUBLIC RECORDS, PALM BEACH COUNTY, FLORIDA LYING IN SECTION 34, TOWNSHIP 45 SOUTH, RANGE 42 EAST, PALM BEACH COUNTY, FLORIDA

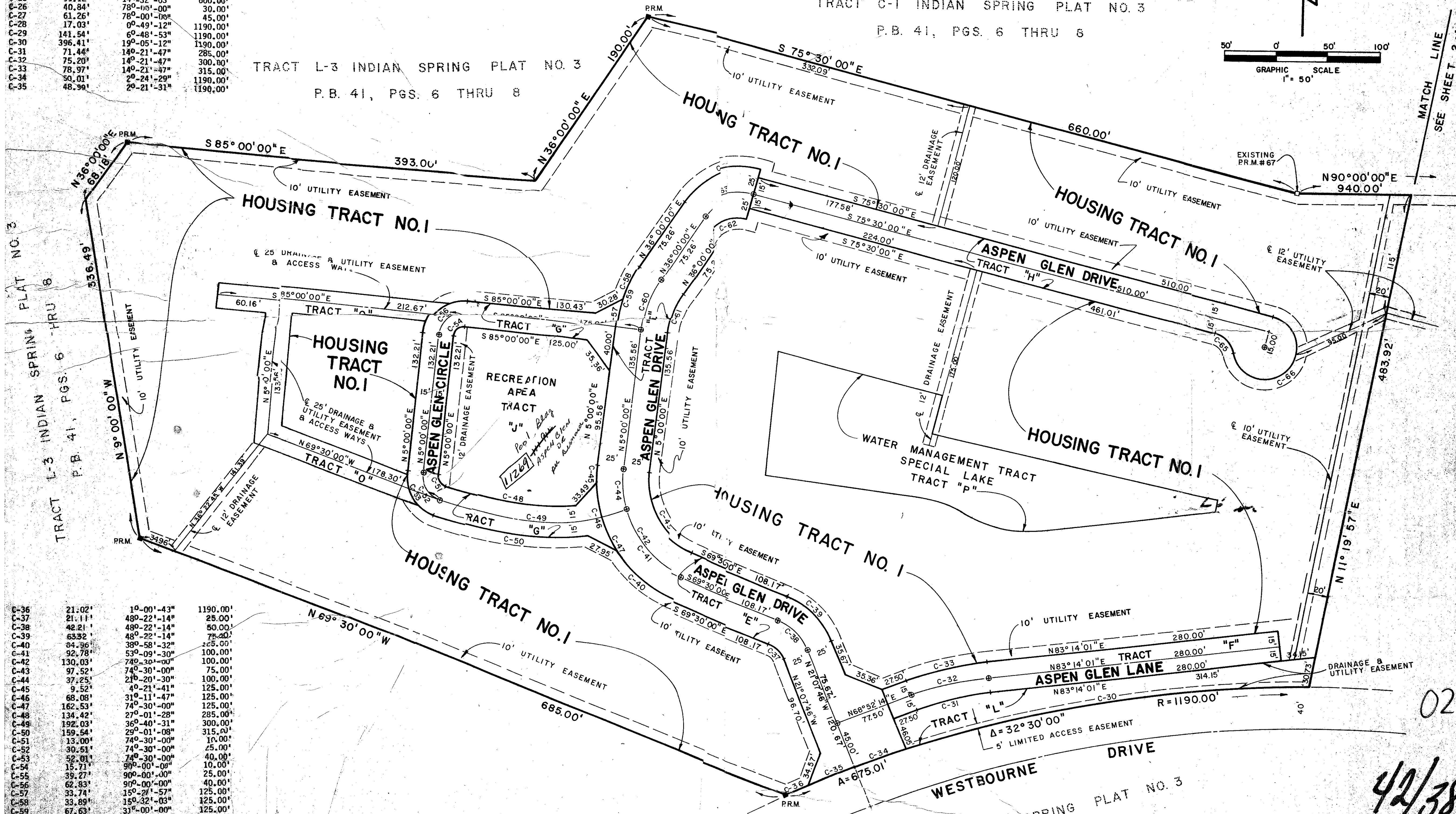
JANUAR, 1981

TRACT C-1 INDIAN SPRING PLAT NO. 3  
 P.B. 41, PGS. 6 THRU 8

TRACT L-3 INDIAN SPRING PLAT NO. 3  
 P.B. 41, PGS. 6 THRU 8



MATCH LINE SEE SHEET 2 of 3



C-36	21.02'	1°-00'-43"	1190.00'
C-37	21.11'	48°-22'-14"	25.00'
C-38	42.21'	48°-22'-14"	50.00'
C-39	63.32'	48°-22'-14"	75.00'
C-40	84.36'	38°-58'-32"	100.00'
C-41	92.78'	53°-09'-30"	100.00'
C-42	130.03'	74°-30'-00"	100.00'
C-43	97.52'	74°-30'-00"	75.00'
C-44	37.25'	2°-20'-30"	100.00'
C-45	69.52'	4°-21'-41"	125.00'
C-46	162.53'	74°-30'-00"	125.00'
C-47	134.42'	27°-01'-28"	285.00'
C-48	192.03'	36°-40'-31"	300.00'
C-49	159.54'	29°-01'-08"	315.00'
C-50	13.00'	74°-30'-00"	10.00'
C-51	30.51'	74°-30'-00"	25.00'
C-52	52.01'	74°-30'-00"	40.00'
C-53	15.71'	90°-00'-00"	10.00'
C-54	39.27'	90°-00'-00"	25.00'
C-55	62.83'	90°-00'-00"	40.00'
C-56	33.74'	15°-27'-57"	125.00'
C-57	33.89'	15°-32'-03"	125.00'
C-58	67.63'	31°-00'-00"	125.00'
C-59	58.11'	31°-00'-00"	100.00'
C-60	40.58'	31°-00'-00"	75.00'
C-61	41.84'	68°-30'-00"	35.00'
C-62	71.73'	68°-30'-00"	60.00'
C-63	101.62'	68°-30'-00"	85.00'
C-64	27.47'	62°-57'-52"	25.00'
C-65	127.22'	242°-57'-52"	30.00'

0259-001

42/38

EASEMENT PAPERS ATTACHED

TRACT "I" INDIAN SPRING PLAT NO. 3  
 P.B. 41, PGS. 6 THRU 8

ROSSI AND MALAVASI  
 ENGINEERS, INC.  
**Alpha At**  
 HOUSING TRACT "A"  
 INDIAN SPRING

Date: JANUARY, 1981  
 Designed: \_\_\_\_\_  
 Drawn: C. GOSS  
 Scale: 1" = 50'  
 Job No. 3152-80  
 Sheet 3 of 3